

SDM BATTERY 680P



Part Number: 400202



70 - 680 NM

MAX SPEED 12,0 RPM

8 PRESETS

LED STATUS INDICATORS

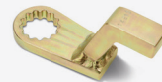
SPECIFICATIONS

- **TORQUE RANGE:** 70 - 680 Nm
- **SPEED:** 12,0 RPM
- **WEIGHT:** 3,3 Kg with battery, excluding reaction arm and impact socket
- **SQUARE DRIVE:** 3/4" square drive
- **BATTERY:** Two Lithium-ion 20V/5.0Ah 100Wh batteries with charger
- **NOISE LEVEL:** Maximum 85 dB
- **TORQUE SETTING:** Torque chart (140 steps)
- **REPEATABILITY ON SAME JOINT*:** +/- 3%.

* Test results from Radial's certified calibration lab

SUITABLE REACTION ARMS

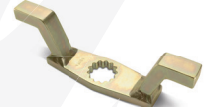
Standard
PN: 301158



Deep socket
PN: 28761



Double ended
PN: 28762



Blank
PN: 28771



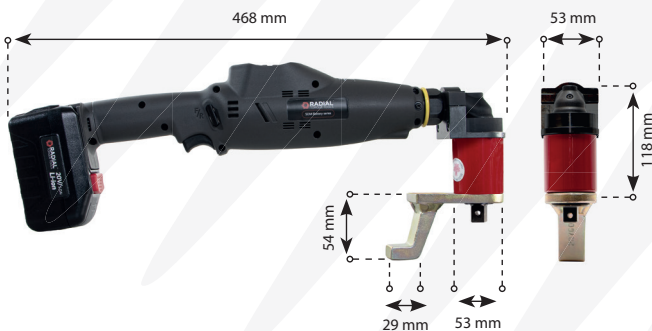
Double ended blank
PN: 28765



Safety sliding
PN: 28774



DIMENSIONS IN MM



TOOL KIT INCLUDING

- SDM BATTERY 680P
- Standard reaction arm (PN: 301158)
- Two retaining rings (PN: 14360)
- Two batteries with quick charger
- Weatherproof storage case
- Calibration certificate
- Usermanual



ACCESSORIES

Product	Part number
20V Lithium-ion battery 5.0 Ah/100 Wh	3000174
20V Lithium-ion charger for 5.0 Ah	3000134



Non Impacting



Safe & Reliable



Lithium-ion battery



According to European standards

2026 - V.01 Disclaimer: The information in this document is subject to change without notice. While endeavored to keep the information up to date and correct, no rights can be derived. If there are any doubts or questions, please contact Radial Torque Tools B.V..

RADIAL
TORQUE TOOLS
WWW.RADIALTORQUE.EU