

SDM BATTERY 1400P



Part Number: 400203



130 - 1.400 NM
MAX SPEED 12,0 RPM
8 PRESETS
LED STATUS INDICATORS

SPECIFICATIONS

- **TORQUE RANGE:** 130 - 1.400 Nm
- **SPEED:** 12,0 RPM
- **WEIGHT:** 4,5 Kg with battery, excluding reaction arm and impact socket
- **SQUARE DRIVE:** 3/4" square drive
- **BATTERY:** Two Lithium-ion 20V/5.0Ah 100Wh batteries with charger
- **NOISE LEVEL:** Maximum 85 dB
- **TORQUE SETTING:** Torque chart (140 steps)
- **REPEATABILITY ON SAME JOINT*:** +/- 3%.

* Test results from Radial's certified calibration lab

SUITABLE REACTION ARMS

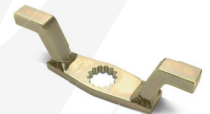
Standard
PN: 19260



Deep socket
PN: 13367



Double ended
PN: 13368



Blank
PN: 13364



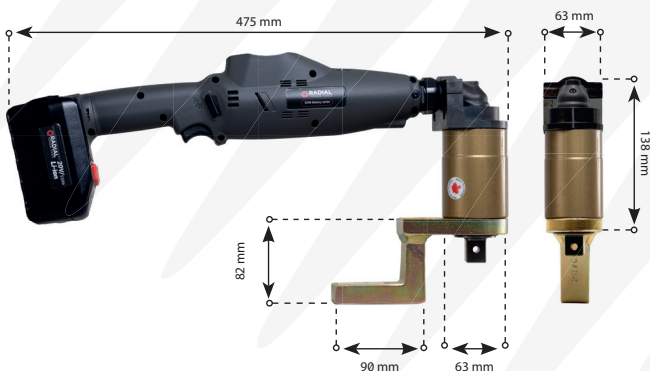
Double ended blank
PN: 13365



Safety sliding
PN: 25243



DIMENSIONS IN MM



TOOL KIT INCLUDING

- SDM BATTERY 1400P
- Standard reaction arm (PN: 19260)
- Two retaining rings (PN: 12733)
- Two batteries with quick charger
- Weatherproof storage case
- Calibration certificate
- Usermanual



ACCESSORIES

Product	Part number
20V Lithium-ion battery 5.0 Ah/100 Wh	3000174
20V Lithium-ion charger for 5.0 Ah	3000134



Non Impacting



Safe & Reliable



Lithium-ion battery



According to European standards

2026 - V.01 Disclaimer: The information in this document is subject to change without notice. While endeavored to keep the information up to date and correct, no rights can be derived. If there are any doubts or questions, please contact Radial Torque Tools B.V..

RADIAL
TORQUE TOOLS
WWW.RADIALTORQUE.EU